

ST. STEPHEN'S EPISCOPAL CHURCH

KEEPING
FAITH,
LOOKING
AHEAD:

THE SECOND
CENTURY CAMPAIGN

To the Members and Friends of St. Stephen's Church:

This is our moment—in God's time—and how grateful I am to share it with you. For nearly 90 years, St. Stephen's Episcopal Church has been a welcoming community grounded in worship, connection, and care. **With a deep commitment to living out our faith, we have worked together to make a positive impact, both in our local neighborhoods and around the world.**



Approaching a century of shared life, purpose, and service together at St. Stephen's provides us a unique opportunity to look ahead with intention and ensure our physical home is ready to serve our communal and spiritual needs for the next 100 years.

With this opportunity in mind St. Stephen's is launching "**Keeping Faith, Looking Ahead: The Second Century Campaign,**" to raise the funds necessary to bring our vision of faithful ministry to life, renewing our campus to be more welcoming, accessible, safe, and sustainable. These improvements will ensure a vibrant future for people of all ages and will create space that reflects the heart of our faith: God's love made visible through hospitality, inclusion, and life shared in both joy and sorrow.

When I look out on the congregation today, I see a beautiful and growing community. **My hope and prayer are that, together, we will lay a strong foundation for St. Stephen's future by making space where community we see today can thrive together for the next century to come.** In the work we now undertake, we can honor the legacy of those who built this church and prepared it for us, and we can pass that gift along for those who, by the grace of God, are certainly still to come.

I invite you to join me and a body of very dedicated leaders of St. Stephen's in this sacred effort. Your support, your prayers, your generosity will make all the difference for good as we prepare St. Stephen's Church for its second century of Christian faith, service, and hope.

Gratefully,

The Rev. Tom Cook
Rector, St. Stephen's Episcopal Church



OUR HOPE

Keeping Faith, Looking Ahead will ensure the ongoing support and steady growth of St. Stephen's church, meeting the evolving spiritual, logistical, and social needs of our members and neighbors.

WHO WE ARE TODAY

St. Stephen's is a vibrant, inclusive community committed to faith, service, and offering a welcoming experience for all. As we approach our 90th anniversary, we are looking ahead to our next century of Christian ministry. The goal of this campaign is to prepare by enhancing our buildings and grounds, making our spaces more accessible and hospitable, and completing critical infrastructure updates to support our mission sustainably.

We are deeply rooted in our neighborhood and dedicated to serving the broader community. Updated and renewed facilities will enable us to continue offering not just worship, but also music events, Vacation Bible School, teen retreats, historic tours, community meals, and space for connection and support.

At the heart of St. Stephen's is our commitment to serving others. Our outreach spans the Twin Cities and beyond, rooted in Christ's commandment to love our neighbors. We partner with numerous organizations and work hand-in-hand to share our blessings — both individually and collectively — with those in need.

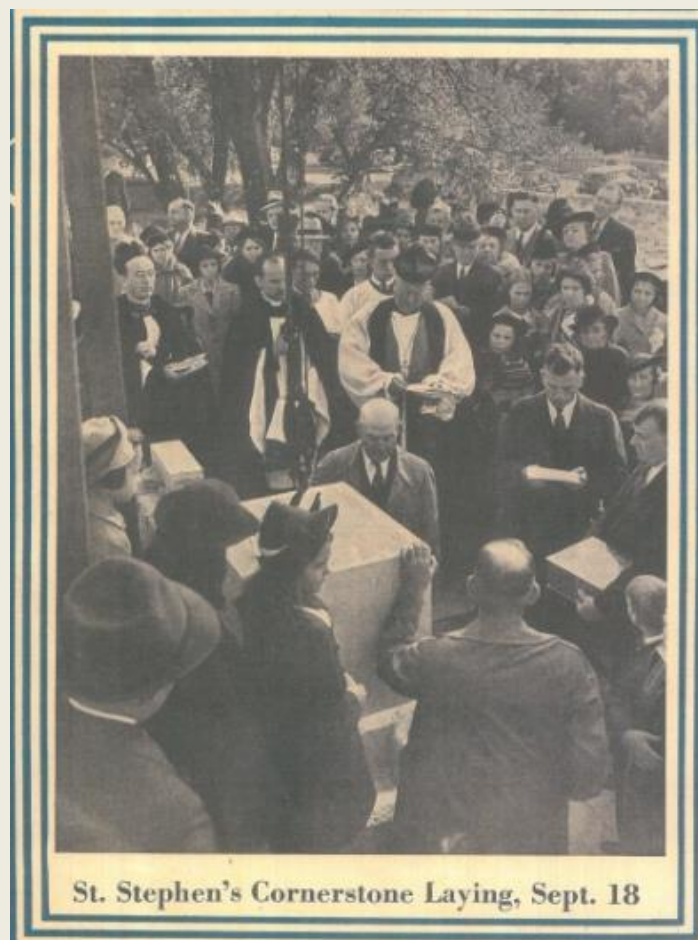
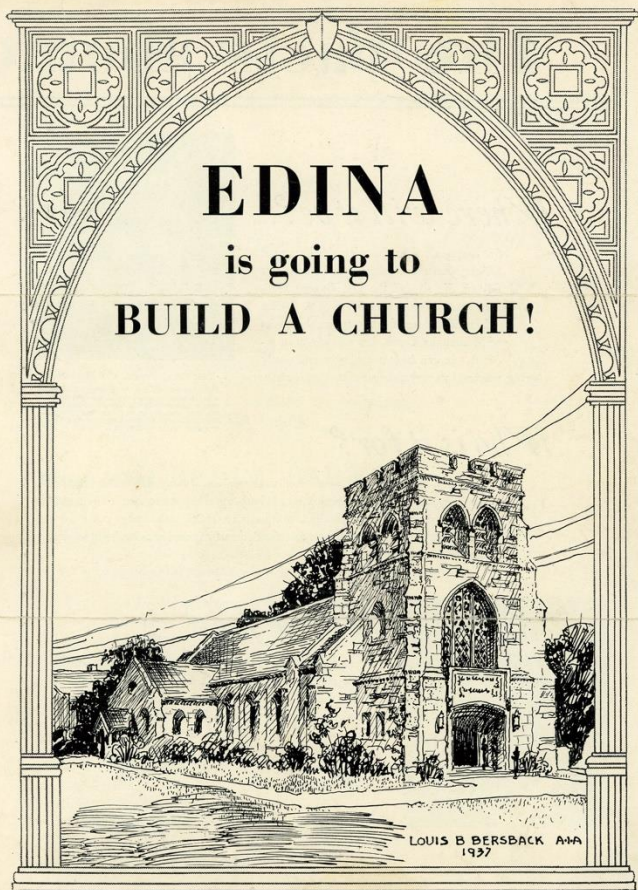
**YOU WILL BE ENRICHED IN EVERY WAY FOR YOUR
GREAT GENEROSITY, WHICH WILL PRODUCE
THANKSGIVING TO GOD THROUGH US;**

2 Corinthians 9:11

A BRIEF HISTORY

Founded in 1937 by a dedicated group of interdenominational community members, St. Stephen's Episcopal Church was envisioned as a welcoming neighborhood church to serve the people of Edina. The architectural design is a replica of the 15th century Old Radnor Church in Wales, harkening back to the Episcopal Church's Anglican roots in Great Britain. Built during the Great Depression, the St. Stephens sanctuary originally included only clear glass windows. Parishioners raised money throughout the years to pay for our beautiful stained-glass windows.

Keeping Faith, Looking Ahead: The Second Century Campaign represents the next step and the first fundraising effort on this scale in a generation.



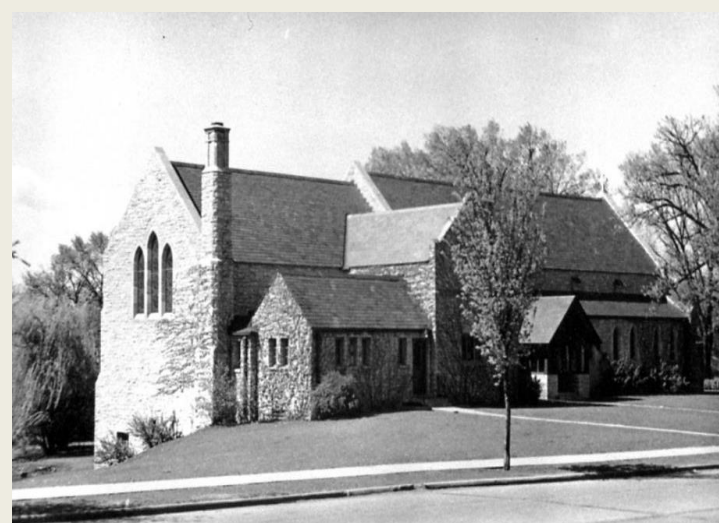
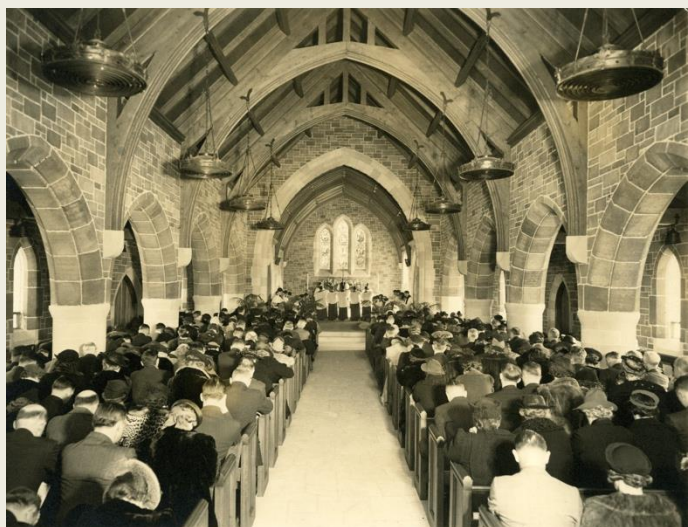
COMMUNITY FOR A LIFETIME

2,985
BAPTISMS

1,587
WEDDINGS

1,300
FUNERALS

161
INTERMENTS





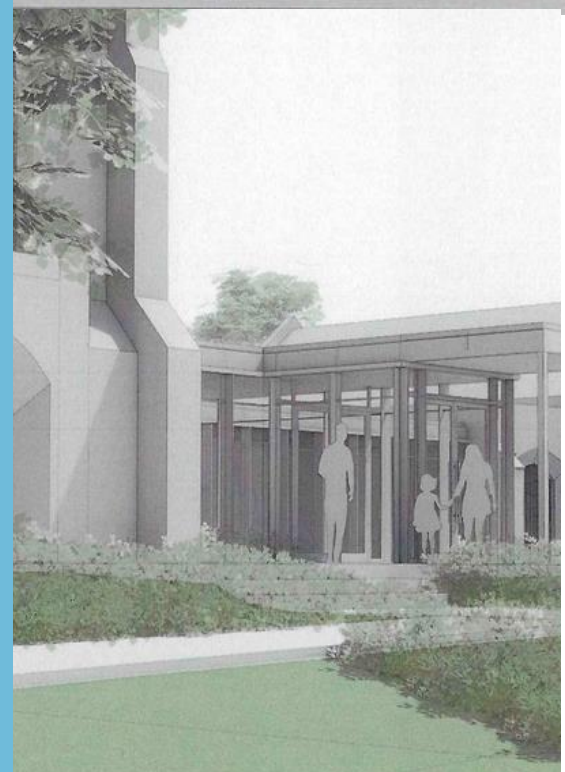
KEEPING FAITH

Since 1937, St. Stephen's has been a spiritual home for every stage of life. From baptisms to weddings, youth formation to adult fellowship, we walk this journey together in faith. Today, we find ourselves blessed with a strong community of long-time members, new families, and a joyous crowd of young people filling our pews every Sunday. From those pews to the nursery to the Gathering Space and everywhere around our spiritual home, our facilities have lovingly served us for decades. But just like with any home, time has taken its toll and the vibrant community we see today is at risk without investment to provide for its future.



LOOKING AHEAD

Our vision is a St. Stephen's where the vitality we sense and celebrate today has everything it needs to thrive well into the next generation: easy access for all generations, a sense of safety for everyone, sustainability that conserves both the Earth and the church's resources, and a deeper connection to the creekside surroundings that define the church's beauty. We seek to renew without erasing, modernizing while preserving the sacred architectural details that have long identified us.



RENDERINGS
CONCEPT ONLY

ALL ARE WELCOME

To fully embody our commitment that All Are Welcome, we are creating spaces that are bright, open, inclusive, and easy to access for all. We are prioritizing safety, visibility, and sustainability with improvements that honor our care for people and the planet.

KEY PROJECTS

- A new, fully accessible and automated main entrance alongside our historic narthex entrance, with space for gathering
- A new, centrally located elevator and stairwell to improve access throughout the Church and Chapel wing
- Enhanced pathways and wider interior corridors connecting the Gathering Space and Commons Room
- An updated, visible primary entrance on Wooddale Avenue providing visitors easier and safer access to our active lower-level





RENEWAL & MODERNIZATION

Our facilities have served us well for generations. Now, they need thoughtful updates to continue serving for the next century.

KEY PROJECTS

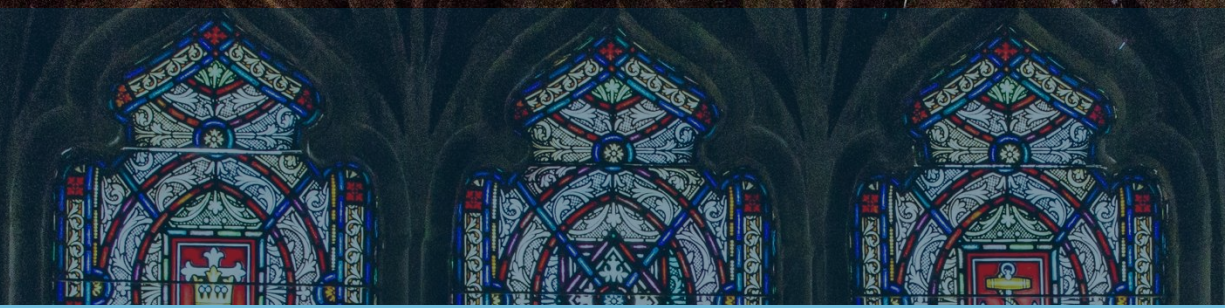
- Renovated and enlarged Gathering Space with windows and doors connecting to the lawn and Minnehaha Creek
- New, accessible restrooms for the Chapel Wing and Gathering Space
- Refreshed and dedicated spaces for Children's and Youth Ministries, Music Ministries, and worship vesting
- Replacement and relocation of outdated HVAC systems to improve building efficiency and reduce our carbon footprint

OUR SECOND CENTURY

Our church leadership, empowered by all our members, has identified a once-in-a-generation opportunity to secure our vision for St. Stephen's future, enhancing the present and ensuring that we remain a thriving, joyful, faith-filled community for decades to come.

This is our moment - blessed and full of possibility. As we look ahead to St. Stephen's 100th year, we stand on the foundation of nearly a century of worship, friendship, faith, and service. Now, with hearts full of gratitude and hope, *Keeping Faith, Looking Ahead: The Second Century Campaign* will provide a course for us to create a church campus that fully reflects who we are, what we believe, and the bright future that awaits St. Stephen's.

Join us in this sacred work. With your prayers, your generosity, and your spirit, we will build something lasting for us and for all those still to come.



Let us build a house where all are named, their songs and visions heard and loved and treasured, taught and claimed as words within the word.

Built of tears and cries and laughter, prayers of faith and songs of grace; let this house proclaim from floors to rafters: all are welcome, all are welcome, all are welcome in this place.

Hymn: Let Us Build A House (All Are Welcome) by Marty Haugen



CAMPAIGN PRAYER

We thank you, Lord... For the community
of St. Stephen's Church;
for our shared life of faith; for the
generosity of our ancestors who called
us to become;
for all who share to build up the church
in our time;
and for those who will carry the faith
after us.

With grateful hearts, we entrust our
lives to you, asking your guidance and
grace as we make preparations for the
future of St. Stephen's Church.

Move us to generosity in support of a
vision for ongoing ministry, for a
campaign to raise funds for the
improvements of our facilities, and for
the will to share the light and hope made
known to us in Jesus Christ this day and
for all our days to come.

Amen.



*Keeping Faith,
Looking Ahead*

THE SECOND CENTURY CAMPAIGN

ST. STEPHEN'S EPISCOPAL CHURCH